

PLANNING

GUIDE

Solo

COLLECTION

BY TRIFAB
I N C

2718, Principal st., Tracadie E1X 1A1

758, Principal st., Beresford

1-877-395-3764

PLANNING AND MEASUREMENT ADVICE

RECOMMENDATIONS

CABINET PRICE LIST

GRID SHEET AND ORDER LIST

MEASUREMENTS

Important verifications

1. MEASURING THE WALLS

- Measure the length of your walls
- Note if the measurements are taken with or without sheetrock

2. POSITION OF WINDOWS AND DOORS

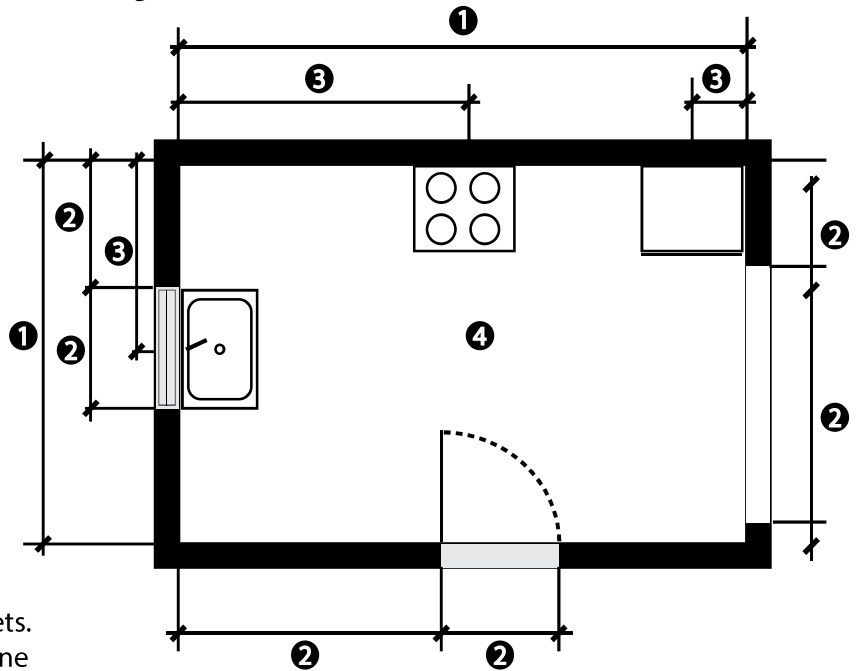
- Measure the distance from the corner of the wall to the framing of the windows and/or doors.
- Measure the width and height of your windows including the frame.
- If you plan on changing the framing for a wider or narrower one it is important to include the difference in your measurements.

3. POSITION OF APPLIANCES, PLUMBING AND ELECTRICAL OUTPUTS.

- If your appliances and your sink remain at the same location, measure the distance between the wall that is closest to the centre of the pipes and/or outlets.
- Do the same for all outlets, switches and/or telephone jacks.

4. CEILING HEIGHT

- Measure the height from the floor. This is important if you wish to box off the top of your cabinets or, if the ceiling is lower than standard.



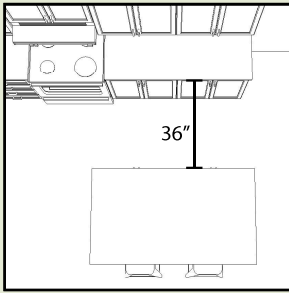
Other important measurements:

- ❑ Note the dimensions of the household appliances that you have or plan to order. It is important to know the model of your range, the model will have an impact on the cut of your countertop.
- ❑ The recommended distance between two countertops is 36". If you are planning of having an island that would be positioned in front of the refrigerator, the recommended pass way is a minimum of 42".
- ❑ Take a special attention to the the pantry cabinet. This cabinet is fabricated in one piece. To be able to place it upright, the height of the ceiling must be at least 87 ½".
- ❑ Analyse the path that you will have to go threw to take the cabinets and countertop where you want to install them. Make sure that the cabinets and countertops can pass easily.

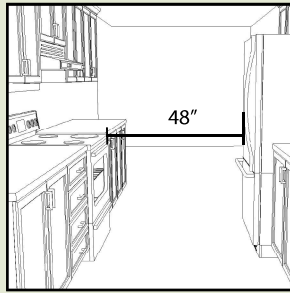
Visit our website www.trifab.ca to find printable grid sheets, as well as all the documentation sheets by clicking on the Solo Collection logo.



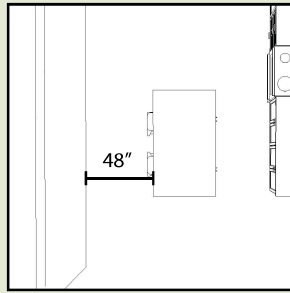
RECOMMENDATIONS



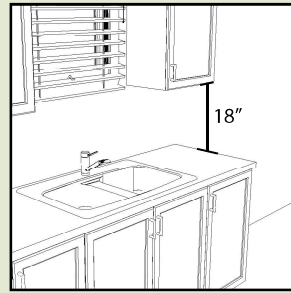
Allow a minimum distance of 36" between cabinets.



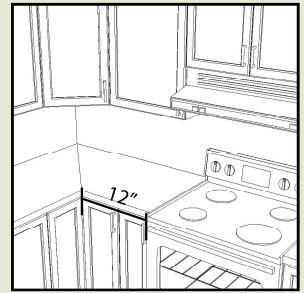
Plan for 48" of clearance in a situation where appliances could be one in front of each other.



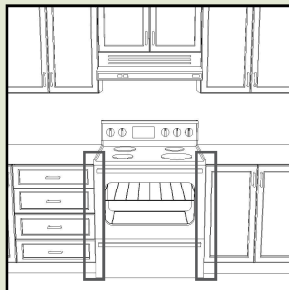
Allow a minimum distance of 48" between a lunch counter and a wall or obstacle.



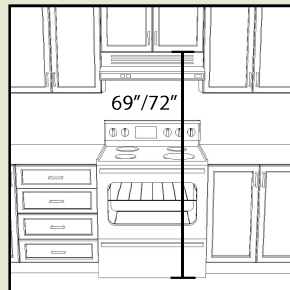
Install the upper cabinets at 18" above the countertop or at 54" from the floor. Do not take into account the light molding.



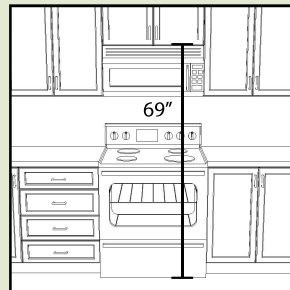
Plan for a width of 12" between the range and the corner of countertops.



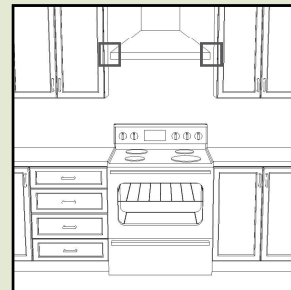
Leave an additional 1/4" clearance on each side of the range to facilitate its installation.



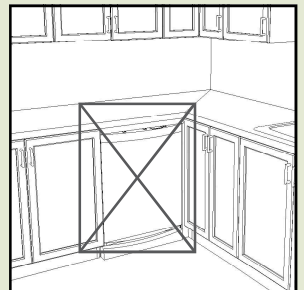
Install the bottom cabinet of a standard hood at a minimum of 69" from the floor if it's an electric range, and at a minimum of 72" from the floor if it is a gas range.



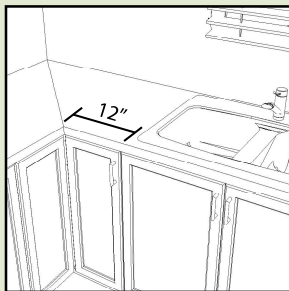
Install the bottom cabinet of a microwave hood at a minimum of 69" from the floor for an electric range. This type of hood is not installed with a gas range.



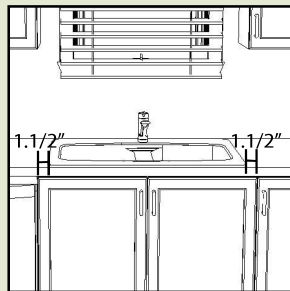
Leave a minimum clearance of 1 1/2" on each side of a chimney hood.



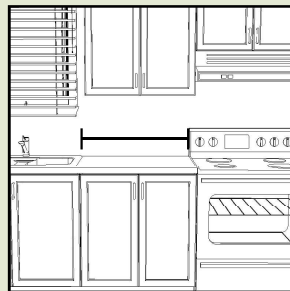
Avoid placing an appliance at the junction of two countertops to avoid creating a conflict of opening between the doors.



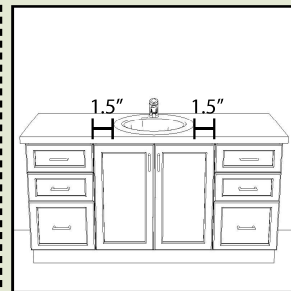
Leave a distance of at least 12" between the sink and a countertop joint.



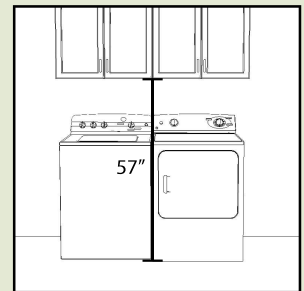
Choose a base for your sink that is at least 3" wider than the sink.



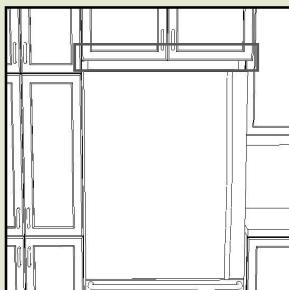
Plan for a space between the range and sink for food preparation.



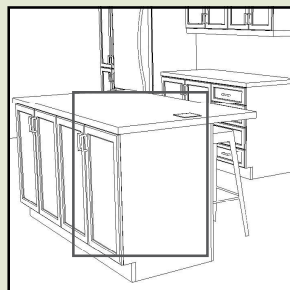
Choose a base for your sink that is at least 3" wider than the sink.



Install the wall cabinets over the washer and dryer at a minimum of 57" from the floor if the appliances have a door opening from the top.



Leave a clearance of at least 1" above the refrigerator.



An electrical outlet on an island is required. Plan its installation in a cabinet.

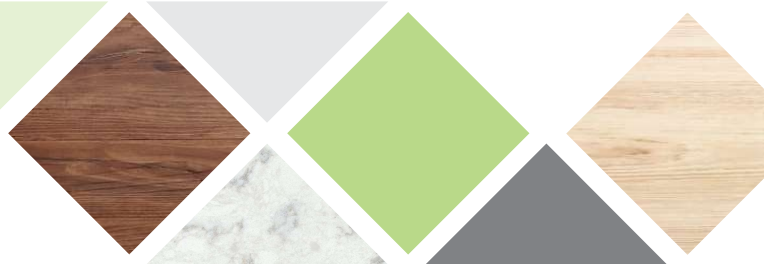


If a dishwasher is adjacent to a refrigerator or pantry panel, use a dishwasher panel or 1 3/4" angled brackets to support the countertop.

Bathroom

* The installation heights that are listed for the installation of hoods are recommendations only. Always refer to the installation guide of the hood for the installation height that should be respected.

RECOMMENDATIONS



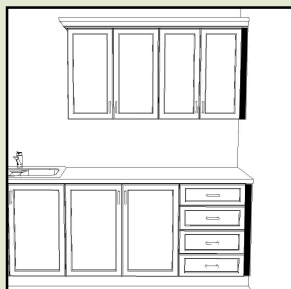
All the cabinets in the the Solo Collection are manufactured with finished sides matching the door color.

There for, there is no need to order extra side panels, with the exeption of certain situations.

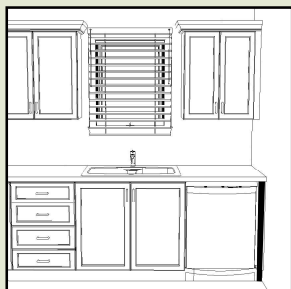


All filler panels come in lenghts of 96" and must be cut to the desired lenght. A piece of edging will also be supplied.

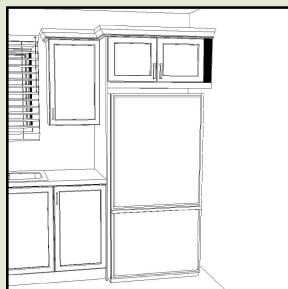
Filler panels



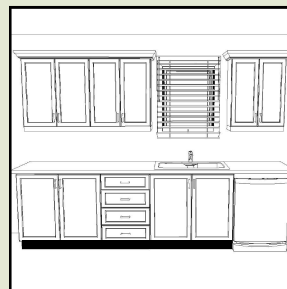
Plan for a 1.1/4" filler panel when a cabinet is adjacent to a wall.



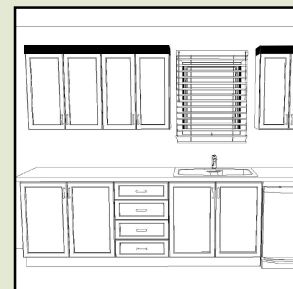
Plan for a 1.1/4" filler panel when a dishwasher is adjacent to a wall, as well as a dish washer panel.



Plan for a filler panel if the refrigerator is adjacent to a wall. Check the refrigerator's specifications to determine the width needed for the filler panel.

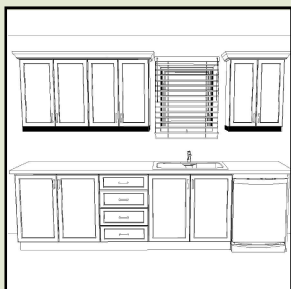


Plan for 4.1/2" high kick plates to cover the unfinished cabinet bottoms.

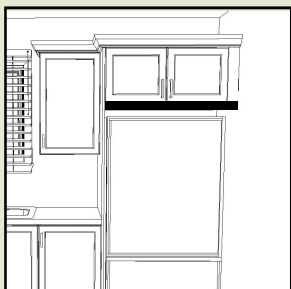


Plan for a 6 to 12" filler panel if you wish to close off your cabinets to the ceiling.

Finishing panels

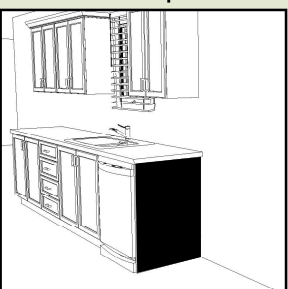


Light moldings are a good way to conceal lights or to conceal the unfinished bottom (white) of your upper cabinets.



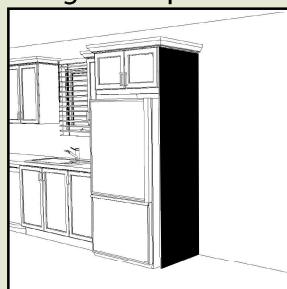
Plan for a light molding below the refrigerator cabinet if there is too much open space between the two of them.

Dish-washer panel



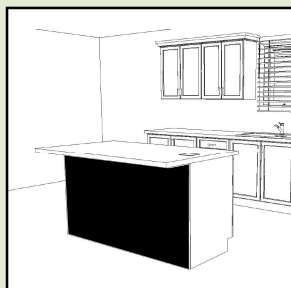
Plan for a dishwasher panel if the side of the dishwasher is exposed.

Full height refrigerator panel

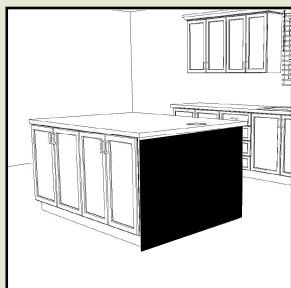


Plan for a refrigerator panel if you wish to hide the side of the refrigerator.

Back and side island pannels



Plan for a back panel on islands.



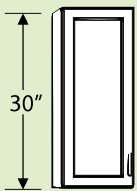
Plan for side panels on islands if there are cabinets back to back.

PRICE LIST

Vanity

Wall vanity Code: **WV**

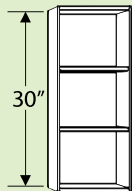
9" deep
12 to 18" wide



30" high x 9" deep				no door			
A	B	C	D	A	B	C	D
12" wide—121—144—172—182							121
15" wide—131—159—194—207							131
18" wide—141—174—216—232							141

Wall vanity no door Code: **WVND**

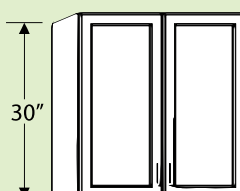
9" deep
12 to 18" wide



A	B	C	D
121			
131			
141			

Wall laundry Code: **WL**

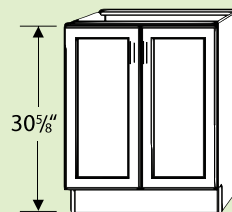
15" deep
27 and 30" wide



30" high x 15" deep			
A	B	C	D
27" wide—197—247—310—334			
30" wide—207—263—333—359			

Base vanity Code: **BV**

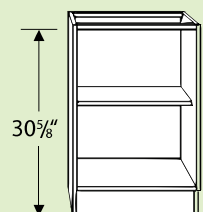
21" deep
12 to 36" wide



30 5/8" high x 21" deep				no doors			
A	B	C	D	A	B	C	D
12" wide—160—183—211—222							160
15" wide—170—199—234—248							170
18" wide—181—215—258—274							181
21" wide—191—231—281—300							191
24" wide—210—255—312—334							210
30" wide—230—287—359—386							230
36" wide—251—320—405—438							251

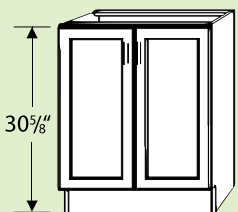
Base vanity no doors Code: **BVND**

21" deep
12 to 36" wide



Base vanity sink Code: **BVS**

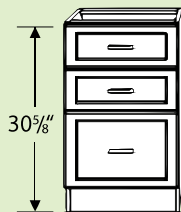
21" deep
24 to 36" wide



no back panel 30 5/8" high x 21" deep			
A	B	C	D
24" wide—214—259—316—338			
30" wide—232—289—360—387			
36" wide—250—318—404—436			

3 drawer vanity Code: **3DV**

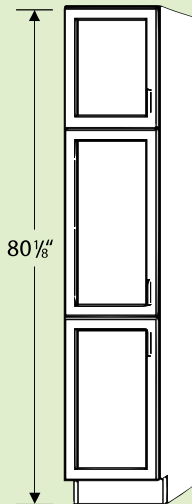
21" deep
12 to 18" wide



3 drawers 30 5/8" high x 21" deep			
A	B	C	D
12" wide—248—305—309—322			
15" wide—254—310—318—331			
18" wide—261—315—330—344			

Linen Code: **L**

18" deep
12 to 18" wide



80 1/8" high x 18" deep			
A	B	C	D
12" wide—350—407—477—503			
15" wide—376—446—533—567			
18" wide—401—485—591—631			

Legend

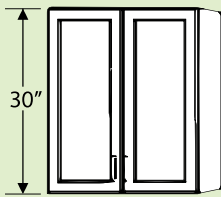
Door materials

- A — Melamine doors
- B — Polyester doors
- C — Wood doors
- D — Laquered doors

PRICE LIST

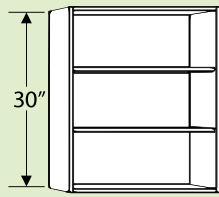
Kitchen Walls

Wall
Code: **W**
12" deep
9 to 36" wide



30" high x 12" deep

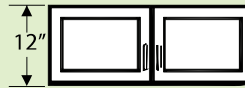
Wall no door
Code: **WND**
12" deep
9 to 36" wide



no door

	A	B	C	D	A	B	C	D
9" wide	115	132	153	161	115			
12" wide	125	147	175	186	125			
15" wide	135	163	198	211	135			
18" wide	145	178	220	236	145			
21" wide	154	193	242	261	154			
24" wide	172	217	273	294	172			
27" wide	182	233	296	319	182			
30" wide	192	248	318	344	192			
33" wide	202	263	340	370	202			
36" wide	212	279	363	394	212			

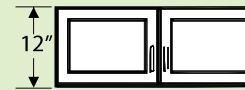
Wall refrigerator/sink/range
Code: **W**
12" deep
30 to 36" wide



12" high x 12" deep

	A	B	C	D
30" wide	134	167	184	195
33" wide	138	168	193	205
36" wide	142	169	202	215

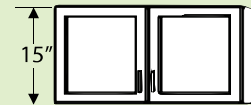
Wall refrigerator
Code: **W**
24" deep
30 to 36" wide



12" high x 24" deep

	A	B	C	D
30" wide	147	180	198	208
33" wide	152	182	207	219
36" wide	157	184	217	230

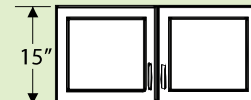
Wall refrigerator/range
Code: **W**
12" deep
24 to 36" wide



15" high x 12" deep

	A	B	C	D
24" wide	136	167	191	202
30" wide	143	171	206	220
33" wide	148	179	218	232
36" wide	153	187	229	245

Wall refrigerator
Code: **W**
24" deep
24 to 36" wide

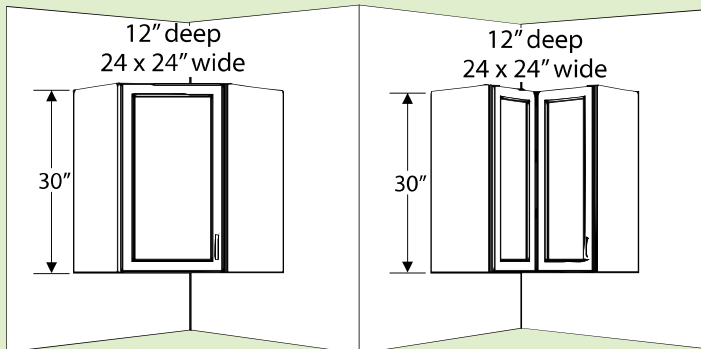


15" high x 24" deep

	A	B	C	D
24" wide	149	180	204	215
30" wide	158	186	221	234
33" wide	164	195	233	248
36" wide	169	203	245	261

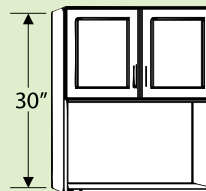
Diagonal wall
Code: **DW**

Corner wall
Code: **CW**



	A	B	C	D
Diagonal	186	216	254	268
Corner	234	276	329	350

Microwave wall
Code: **MW**
12" deep
24" wide



	A	B	C	D
Microwave wall				
30" high x 12" deep				
24" wide	177	210	227	238

Legend

Door materials

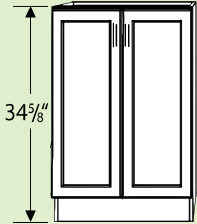
- A — Melamine doors
- B — Polyester doors
- C — Wood doors
- D — Laquered doors

PRICE LIST

Kitchen Base

Base
Code: **B**

24" deep
9 to 36" wide

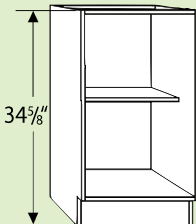


34 5/8" high x 24" deep

	A	B	C	D
9" wide	158	174	195	203
12" wide	168	191	219	229
15" wide	179	207	242	255
18" wide	190	223	265	281
21" wide	200	239	288	307
24" wide	231	275	331	352
27" wide	241	292	354	378
30" wide	252	308	378	404
33" wide	262	324	401	430
36" wide	273	340	424	456

Base no door
Code: **BND**

24" deep
9 to 36" wide

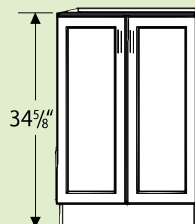


no door

	A	B	C	D
9" wide	158			
12" wide	168			
15" wide	179			
18" wide	190			
21" wide	200			
24" wide	231			
27" wide	241			
30" wide	252			
33" wide	262			
36" wide	273			

Sink base
Code: **SB**

24" deep
24 to 36" wide

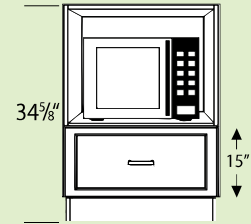


Hardboard backing
34 5/8" high x 24" deep

	A	B	C	D
24" wide	222	266	322	343
27" wide	231	281	344	368
30" wide	240	296	366	392
33" wide	249	311	388	417
36" wide	258	325	409	441

Microwave base
Code: **MWB**

24" deep
24 et 27" wide

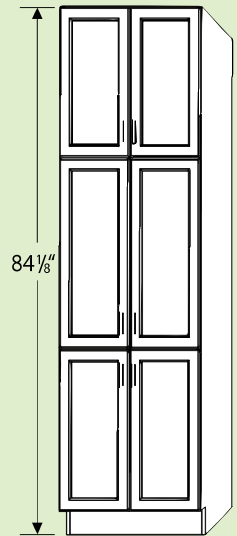


1 drawer
34 5/8" high x 24" deep

	A	B	C	D
24" wide	256	278	306	317
27" wide	267	292	323	335

Pantry base
Code: **PB**

24" deep
15 to 36" wide

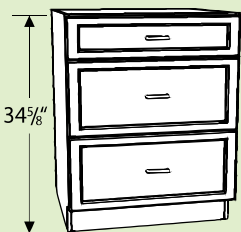


84" high x 24" deep

	A	B	C	D
15" wide	433	506	599	634
18" wide	460	549	660	702
24" wide	542	660	807	863
30" wide	598	745	930	1000
36" wide	653	831	1052	1137

3 Drawer base
Code: **3DB**

24" deep
24 to 33" wide

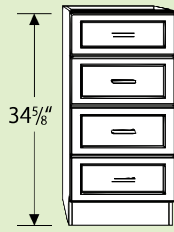


3 drawers
34 5/8" high x 24" deep

	A	B	C	D
24" wide	303	353	403	424
27" wide	316	368	429	452
30" wide	329	385	455	481
33" wide	342	404	480	509

4 Drawer base
Code: **4DB**

24" deep
12 to 21" wide

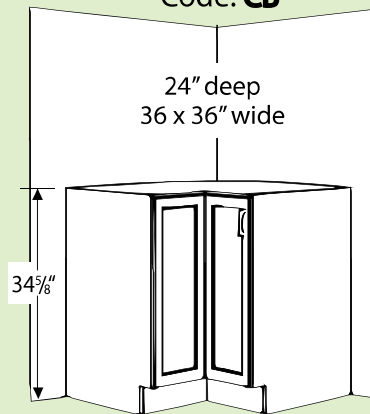


4 drawers
34 5/8" high x 24" deep

	A	B	C	D
12" wide	300	377	381	398
15" wide	306	383	387	404
18" wide	312	389	393	410
21" wide	321	394	408	426

Corner base 90°
Code: **CB**

24" deep
36 x 36" wide



34 5/8" high x 24" deep

	A	B	C	D
90°—36" wide	280	323	376	396

PRICE LIST

Finishings and Accessories

Island back panels 34 $\frac{5}{8}$ " high

ABCD
36 $\frac{1}{8}$ " wide — 56
42 $\frac{1}{8}$ " wide — 58
48 $\frac{1}{8}$ " wide — 63
54 $\frac{1}{8}$ " wide — 70
60 $\frac{1}{8}$ " wide — 75
66 $\frac{1}{8}$ " wide — 92
72 $\frac{1}{8}$ " wide — 101
78 $\frac{1}{8}$ " wide — 113
84 $\frac{1}{8}$ " wide — 120
96 $\frac{1}{8}$ " wide — 127

Side panels 34 $\frac{5}{8}$ " high

ABCD
24 $\frac{1}{2}$ " wide — 46

Side panels 84 $\frac{1}{8}$ " high

ABCD
24 $\frac{1}{2}$ " wide — 81
27" wide — 90
30" wide — 101

Filler panels 96" long

ABCD
4 $\frac{1}{2}$ " high — 42 (kick plate)
6" high — 49
12" high — 57

Crown moldings

#R364 Stained Birch	(8' long) — 113
#WP22 MDF Laquered	(8' long) — 108
#WP22 Polyester	(8' long) — 77

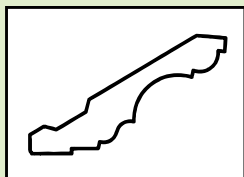
Light moldings

#LM-BMC Stained Birch	(8' long) — 82
#LM-4022 Polyester	(8' long) — 67
#LM-5/8" MDF Laquered	(8' long) — 88
#LM-5/8" Melamine	(8' long) — 41

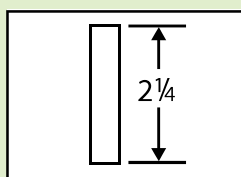
Accessories

Cutlery tray	— 43
Cutlery tray for big utensils	— 43
Pull out towel bar	— 41
15 litre garbage	— 71
Lunch counter bracket	— 43
Kitchen installation kit	— 89
Vanity installation kit	— 69

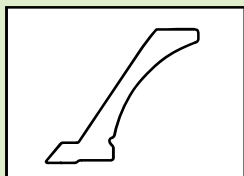
Crown molding #R364



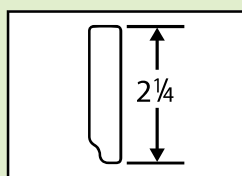
Light molding #BMC/#LM



Crown molding #WP22



Light molding #4022



Legend

Door materials

- A — Melamine doors
- B — Polyester doors
- C — Wood doors
- D — Laquered doors

Please view the order list that is included to help to take note of the cabinets and accessories you wish to order.